

**The Shenandoah Valley Partnership (SVP)** is a public/private partnership providing marketing and business assistance for the Shenandoah Valley of Virginia. SVP brings together business, government and education leaders to promote new investment, strengthen existing business and guide workforce development.

**THE PARTNERSHIP**  
12 Local Governments  
150+ Private Investors

**LOCALITIES WE SERVE**  
Augusta County  
Bath County  
Highland County  
Page County  
Rockbridge County  
Rockingham County  
Shenandoah County  
City of Buena Vista  
City of Lexington  
City of Harrisonburg  
City of Staunton  
City of Waynesboro

**RESOURCES AVAILABLE AT**  
[WWW.THESHENANDOAHVALLEY.COM](http://WWW.THESHENANDOAHVALLEY.COM)

- Search available real estate
- Find education and training programs
- Explore career options through Valley Career Hub
- Discover Shenandoah Valley's Farm Trail on Fields of Gold

*More than 28,000 people are employed in agriculture and forestry in the Shenandoah Valley creating a regional economic impact of more than \$6.2 billion.*

SOURCE: THE ECONOMIC IMPACT OF AGRICULTURE AND FORESTRY IN VIRGINIA, WELDON COOPER, 2013

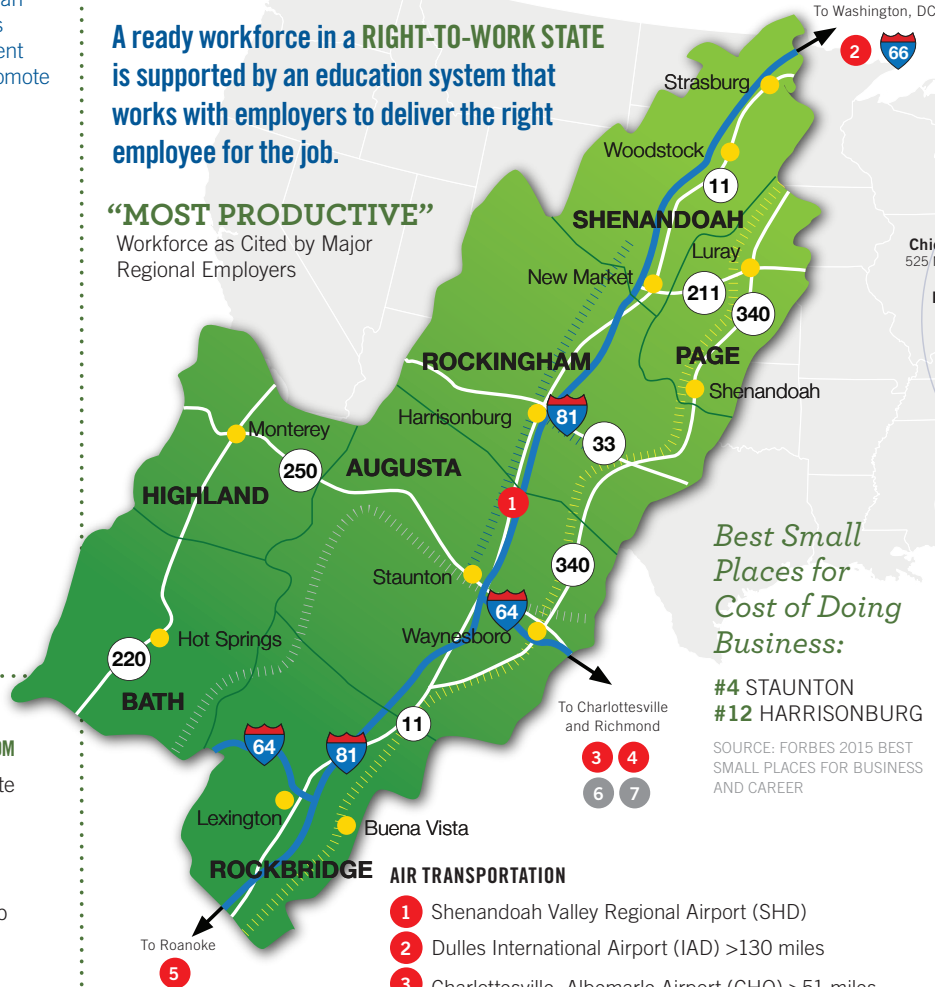
### VIRGINIA'S TOP AGRICULTURE PRODUCING COUNTIES

Four out of five of Virginia's top agriculture producing counties are located in the Shenandoah Valley.

**STRATEGICALLY LOCATED** on the East Coast, interstate, rail, air and port service keeps the **SHENANDOAH VALLEY** well connected to U.S. and International markets.

A ready workforce in a **RIGHT-TO-WORK STATE** is supported by an education system that works with employers to deliver the right employee for the job.

**"MOST PRODUCTIVE"**  
Workforce as Cited by Major Regional Employers



**137 MILES**  
of Interstate  
64 81 66

**2000 ACRES** of publicly controlled land with available industrial parks, greenfield sites, and ready-to-occupy buildings.

**363,568**  
Regional Population

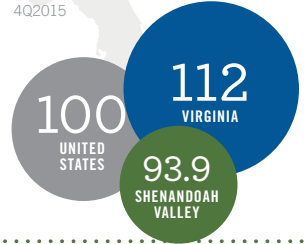


*Best Small Places for Cost of Doing Business:*

**#4 STAUNTON**  
**#12 HARRISONBURG**

SOURCE: FORBES 2015 BEST SMALL PLACES FOR BUSINESS AND CAREER

**COST OF LIVING INDEX**  
4Q2015



**ACCESS TO 24,000 GRADUATES**  
annually from 14 colleges and universities

### COLLEGES AND UNIVERSITIES

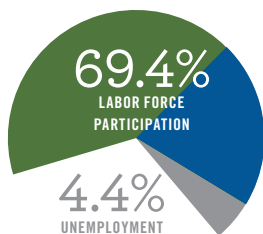
- American National University
- Blue Ridge Community College
- Bridgewater College
- Dabney S. Lancaster Community College
- Eastern Mennonite University
- James Madison University
- Lord Fairfax Community College
- Mary Baldwin College
- Shenandoah University
- Southern Virginia University
- Virginia Military Institute
- Virginia Tech
- University of Virginia
- Washington & Lee University

### RAIL TRANSPORTATION

- |||| Shenandoah Valley
- |||| CSX
- |||| Buckingham Branch
- |||| Norfolk Southern

### A DIVERSE & MOBILE WORKFORCE

SOURCE: CHMURA ECONOMICS AND ANALYTICS, 3Q2015V



### AIR TRANSPORTATION

- 1 Shenandoah Valley Regional Airport (SHD)
- 2 Dulles International Airport (IAD) >130 miles
- 3 Charlottesville–Albemarle Airport (CHO) >51 miles
- 4 Richmond International Airport (RIC) >130 miles
- 5 Roanoke–Blacksburg Regional Airport (ROA) >100 miles

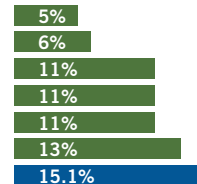
### PORT ACCESS

- 6 Inland Port of Virginia >77 miles
- 7 Port of Virginia >214 miles (55ft depth)

The Shenandoah Valley region has 15.1% of the labor force employed in manufacturing with a concentration in Food Processing, Packaging, Plastics, Equipment, Manufacturing, HVAC/R, and Metal Fabrication

### TOP INDUSTRY SECTOR EMPLOYMENT

- Transportation & Warehousing
- Construction
- Retail Trade
- Educational Services
- Accommodation & Food Service
- Healthcare & Social Assistance
- Manufacturing**



### VALLEYCAREERHUB

Find your future in the Shenandoah Valley at [www.valleycareerhub.com](http://www.valleycareerhub.com)